

Why

The District has experienced significant population growth in Center City DC in recent years, resulting in increased demand for high quality open space and an urgent need for re-envisioning Franklin Park. Franklin Park, at 4.79 acres, is the largest National Park Service reservation in downtown DC and therefore provides a unique opportunity to serve the community and enhance urban living. Currently the park does not meet today's diverse urban needs. The Partners - National Park Service, District of Columbia and Downtown DC BID - see the potential to transform Franklin Park into one of our nation's premier urban parks.



When

The Partners anticipate beginning construction on the park improvements by fall 2016 with an estimated completion date of summer 2017. The District of Columbia will initiate further design refinements to the park plan and the development of construction documents in Winter 2015 following the successful completion of a management agreement between the National Park Service and the District of Columbia. The Partners working with property owners will secure resources for the construction, operations and maintenance of the park over the next year.

A transformed Franklin Park will...

Attract a variety of visitors through active and passive recreational activities

Provide essential services, including food, rest stations, security and information access

Encourage a sense of community and year-round use through regular programmed events

Reveal its rich natural and social history in the life of the city and the nation

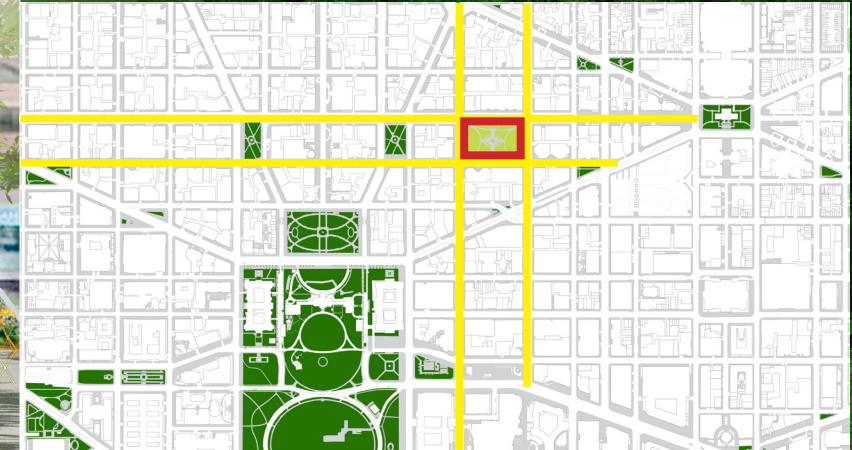


FRANKLIN PARK



The Park Today

Franklin Park has not had sufficient investment and management for a significant period of time. The park is in disrepair and lacks amenities that a growing commercial and residential area demands. The park has the potential to be a premier urban park that adds value to the area's economy and the quality of life of workers, residents and visitors.



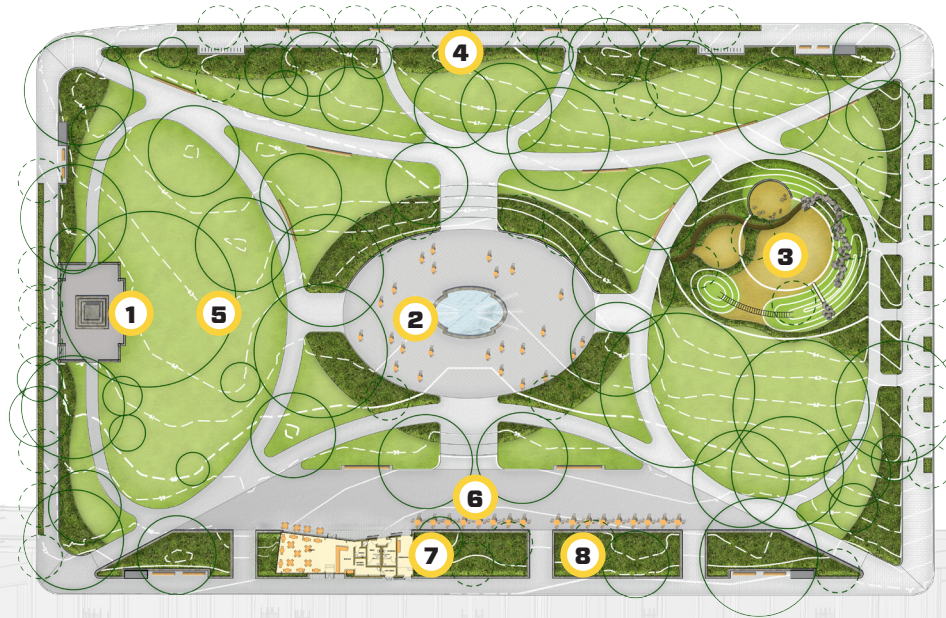
How

The National Park Service, the District of Columbia, and the Downtown Business Improvement District (the Partners) together are collectively committed to transforming Franklin Park into an active, flexible, sustainable and historic urban park connected to its community. To realize this dramatic transformation, the Partners pursued an inclusive design process, including an integrated approach to maintenance and operations. A new partnership between the public and private sectors is required for the funding and management of a transformed Franklin Park.

Future Park

People are the life-blood of parks and programming is an essential component for activating public spaces. Park programming includes the physical amenities in the park such as drinking fountains, a children's garden, restrooms and a café.

The park design includes both organized and unorganized activities, unstructured play and learning opportunities. Park programs will include large, medium and small activities that will be balanced to harmonize with the standards of care for park maintenance and operations.



KEY

- | | |
|-------------------------------------|---|
| 1 COMMODORE BARRY STATUE | 5 LAWN |
| 2 CENTRAL FOUNTAIN AND PLAZA | 6 TERRACE |
| 3 CHILDREN'S GARDEN | 7 CAFE, BATHROOMS AND OPERATIONS |
| 4 SEASONAL PLANTING | 8 RAIN GARDEN |

Relax

The terrace is a pervious but paved area that will allow for special structured events to be held in the park without negatively impacting lawn areas. Visitors will be able to sit at the moveable tables and chairs and eat, read or simply enjoy the activity in the park. The pavement may be designed to show a timeline showing the rich history of this site.



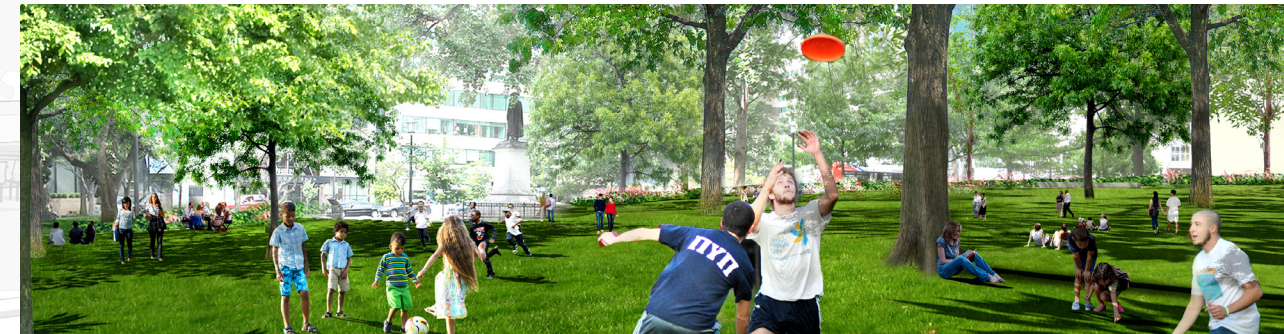
Gather

A series of special events will be held in the park in the central plaza, on the terrace or occasionally on the lawn areas to attract a variety of users throughout all four seasons. These events will include movie nights, arts festivals, farmers markets and possibly holiday gatherings. Franklin Park will become the neighborhood's living room on a daily basis.



Play

The lawn areas will be maintained as flexible spaces for public use and will provide ample room for informal play for people of all ages. A children's garden will provide focused activities and educational opportunities for children who attend nearby schools and the families who live within a few blocks of Franklin Park. The numerous day care centers in the area will also benefit from this amenity.



Refresh

Future tree plantings will ensure that Franklin Park remains a green oasis for the next 100 years. Seasonal plantings will provide interest year-round and the central fountain will provide a cooling aspect during hot summers. The park will first and foremost be a place of respite from the stresses of urban life for all its visitors.

